

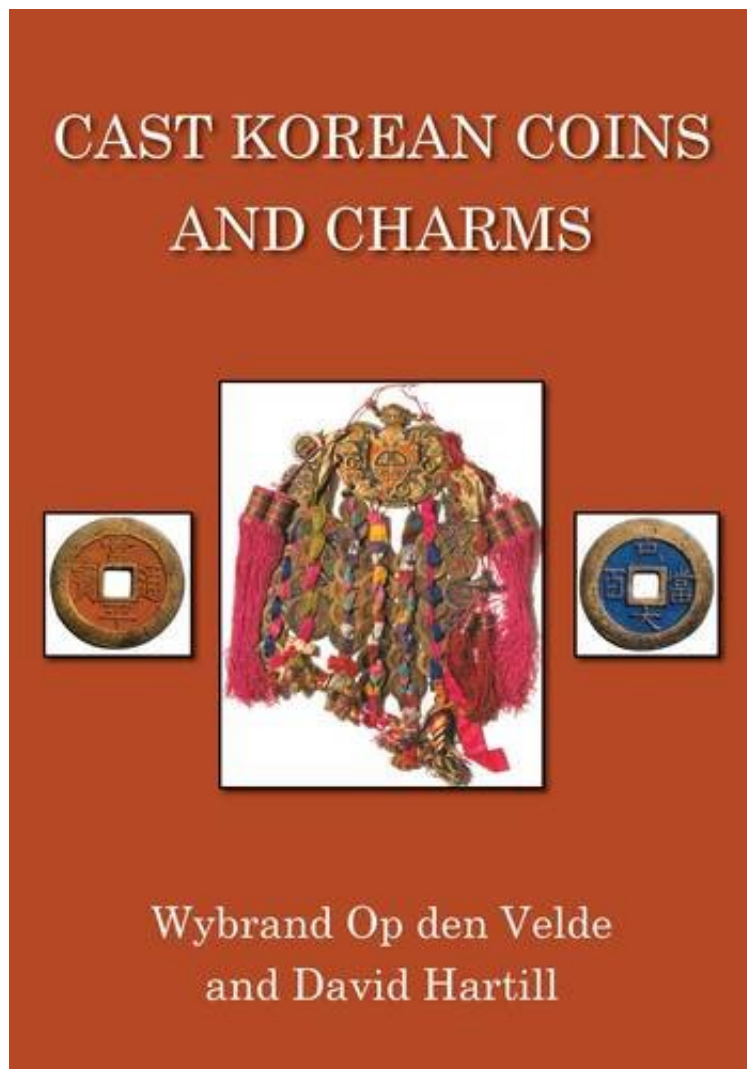
16.Mb



Read Online

Wybrand Op den Velde, David Hartill

*DOC | *audiobook | ebooks | Download PDF | ePub*



[Free] Cast Korean Coins and Charms

Cast Korean Coins and Charms

Wybrand Op den Velde, David Hartill : Cast Korean Coins and Charms before purchasing it in order to gage whether or not it would be worth my time, and all praised Cast Korean Coins and Charms:

3 of 3 people found the following review helpful. The New Standard By Scott Semans New standard Western work on the series, building on Mandel and various Korean works. Coin listings use Mandel's 1972 Cast Coins of Korea format and an expansion of his numbering system, nearly doubling the listings with size and calligraphy variants. Each entry includes a rubbing (usually Mandel's), Catalog number, cross-reference to Standard Catalog of World Coins (KM) and the annual Ohsung catalog, description of variant features, furnace number range, date, and rarity rating. Extensive historical and numismatic information. The charms section has unique catalog numbers, cross-references to both Mandel's manuscript on charms and Han Yong-dal's Korean work, bw photo, rarity rating, and good description and

translation of the design elements which are further explored in an Iconography section. Warning to collectors: Koreans believe (correctly?) that charms were made at Seoul-area mints, which would make them, unlike Chinese, Japanese, and other charms, a sort of official commemorative coinage. Thus, pieces which do not appear to be "original" are valued at little in the Korean market. The majority of charms found outside Korea are copies of the the 1950-60s, or earlier, so collectors should be wary of paying significant money for a piece based on apparent rarity. The photos in this work are not large enough for authentication. Close comparison to the color photos in the two Korean charm works, or a Korean auction catalog may help, but apparently even advanced Korean collectors will differ on what is an "original."

Cast Korean Coins and Charms